

THE DANISH WADDEN SEA NATIONAL PARK - A DIFFERENT APPROACH TO NATIONAL PARK MANAGEMENT





ENVIRONMENTAL
PERFORMANCE
REVIEWS

DENMARK



OECD 1999:
It is recommended to investigate the possibility of establishing a network of national parks, which could include some of the most valuable coastal ecosystems, such as tidal flats, dune areas, cliff coasts and heaths

The Organisation for Economic Co-operation
and Development



Danish National Parks



22nd of August 2008

National Park
Skjern River –
dropped!



16th of October 2010



29th of August 2009



National Park
North
Zealand of
the Kings–
201?



National Park
Roskilde -
Lejre ??



National Park
The Southern
Fyn Islands –
dropped!



From pilot site to National Park

- Pilot project in 2004-05
- National Park's Act i 2007
- 5 areas nominated in 2008
- WS inaugurated in October 2010
- Area: 146.600 ha (1.466 km²)
- Land area: 30.000 ha (300 km²)



NATIONALPARK
VADEHAVET



DANMARKS NATIONALPARKER



Troels Lund Poulsen

Former Minister of
Environment

*"Outstanding natural values
can and will form the basis for
increased settlement, tourism
and regional growth. 7 out of
10 tourists come to Denmark
to experience nature.."*



Statutory Order for the Wadden Sea National Park

The objectives of the Wadden Sea National Park are:

- To preserve, strengthen and develop natural values, diversity, coherence and dynamics with a special focus on the internationally important shallow sea areas, mud flats, marshlands and other natural areas along the coast.
- To preserve and strengthen landscape and geological values in the unique Wadden Sea landscape.
- To preserve and strengthen the cultural heritage
- To improve the opportunities for experiencing nature, cultural heritage and outdoor recreation in the Wadden Sea landscape.
- To support research, education, nature interpretation and extension in relation to the Wadden Sea values
- To support the development of local communities including local business while at the same time respecting conservation values and maintaining the possibilities for continued farming and fishing.
- To contribute to a coordinated development of the common Danish-German-Dutch Wadden Sea area



WADDEN SEA HOTEL

P

CASINO

WIND-SURFING

WADDEN ROOM

No. 10/10

An aerial photograph showing a vast, intricate network of dark blue, winding channels that branch out across a light brown, cracked, and arid landscape. The channels vary in width and meander across the terrain, creating a complex, web-like pattern. The overall scene conveys a sense of extreme dryness and the stark beauty of a water-scarce environment.

Vision

The Wadden Sea National Park is internationally recognised as a unique landscape with marshes, geest and tidal areas and with values in a class of its own. The National Park will be used, protected and developed in sustainable interaction between nature and man

EXPECTATIONS

An aerial photograph showing a vast colony of seals, likely elephant seals, on a sandy beach. The seals are densely packed in some areas and more scattered in others, extending from the water's edge towards the top of the frame. The ocean is visible in the bottom right corner, with a small wave breaking near the shore.

More and better nature!

The National Park is expected to lead to coherent and goal-oriented planning and an improved economic base for nature restoration and improved nature management

EXPECTATIONS

A woman with her hair in a bun is crouching on a sandy beach, looking out at the ocean. The water is shimmering with sunlight. In the background, there are low hills under a clear sky.

BUSINESS AND SETTLEMENT

The National Park is expected to:

- help prevent the expected decline in local population numbers (0,2-0,3 % per annum) in the coming 20 years. It is especially young people in the age between 16 and 35 who migrate away.
- lead to the creation of new jobs – especially within tourism and the service business.
- expected to make the area more attractive as a place to live and work.

EXPECTATIONS



NATIONALPARK
VADEHAVET



Cultural history and landscape

The Wadden Sea landscape and cultural history is also very unique and the National Park will support the many ongoing initiatives to highlight, improve and communicate these values.

EXPECTATIONS

NATIONALPARK
VADEHAVET



Nature interpretation and outdoor recreation

The National Park is expected to contribute and strengthen the present cooperation and network of nature interpreters, museums and rangers as well as finance new information materials.

The National Park is also expected to contribute significantly to improved facilities for outdoor recreation.



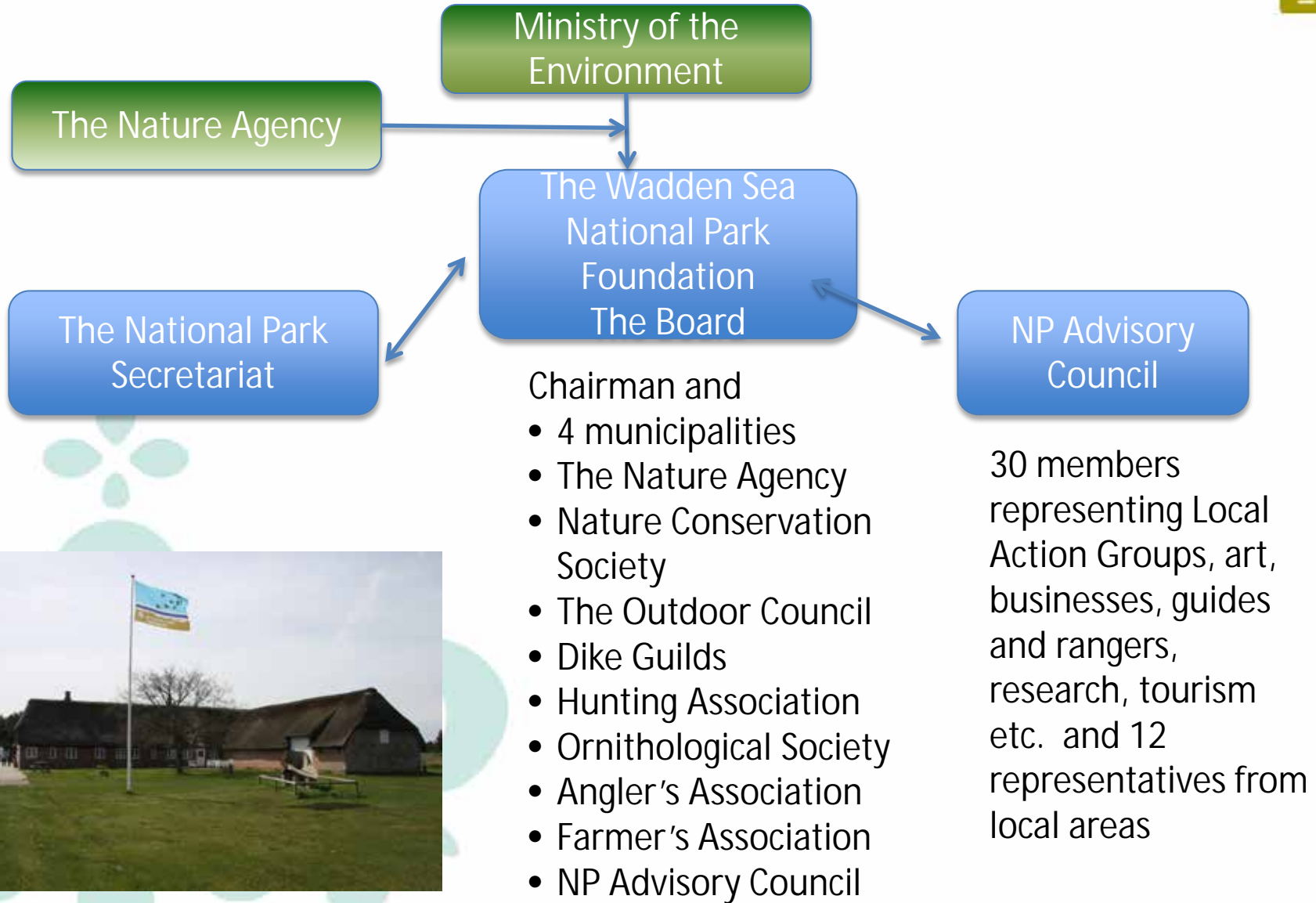
The important message now and then:

The National Park is not an authority!

The Wadden Sea is regulated by a comprehensive set of Laws and regulations and the national park will not lead to any new regulations.

Instead the national park is expected to improve access to information, influence on management issues and support schemes for the local inhabitants through the National Park's Board, Advisory Council and Plan





The National Park Plan

- What do we have today?
- What are we allowed to do?
- What do we want?



The tool box:

Buying and selling of land

Property/land distribution

Permanent agreements

Financial support: Projects, compensation and support schemes

Solely voluntary means to achieve goals



CASE – The Sneum Dike Lake)



CASE – Grazing





CASE – Historical heritage, buildings worthy of preservation



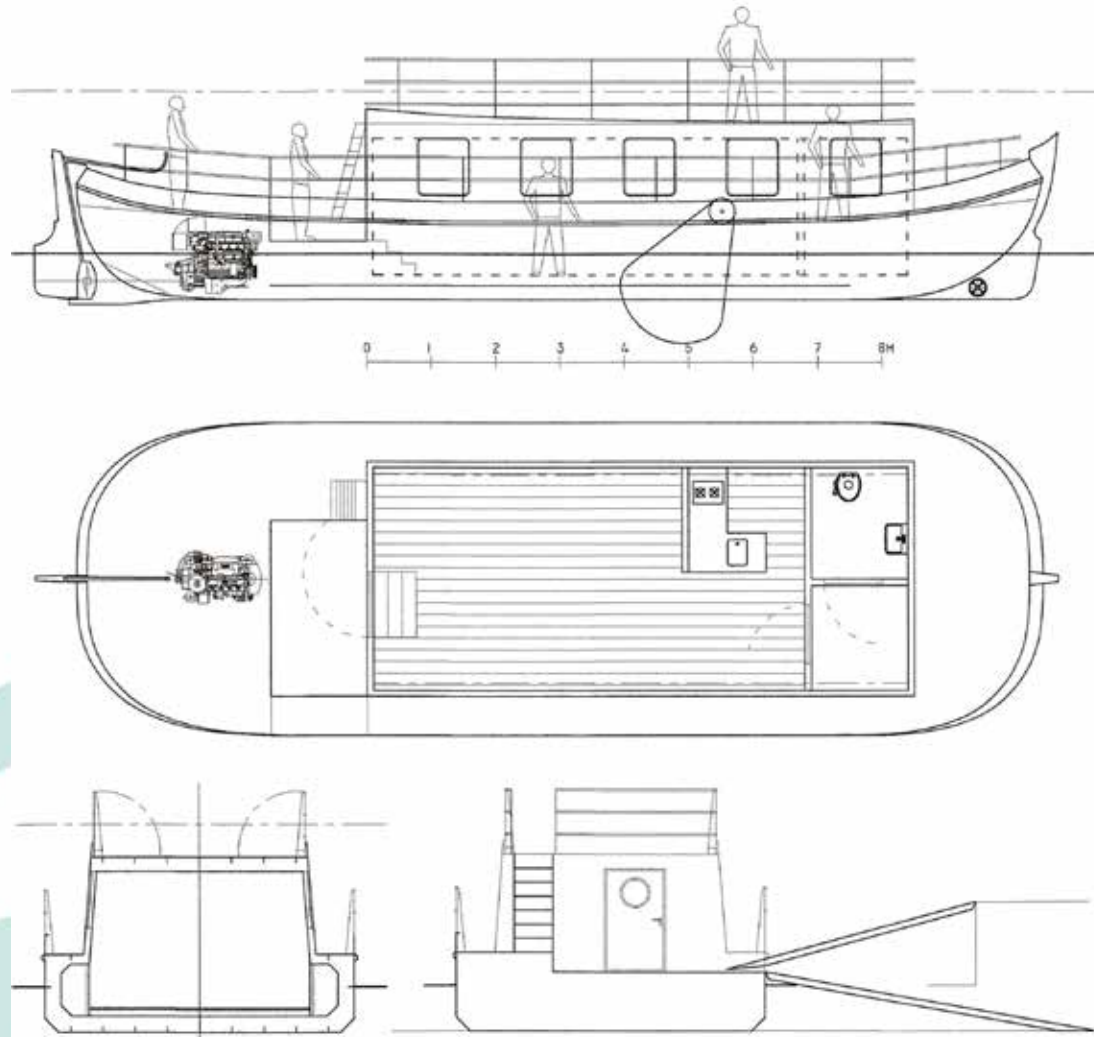


CASE – Historical harbour sites





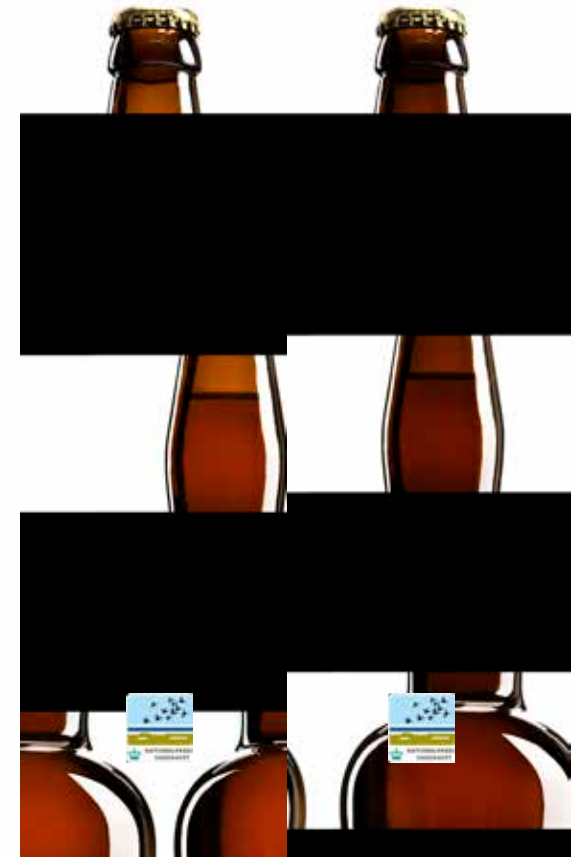
CASE – National Park Ship





CASE – National Park Partnership

Types of partners	Approved	Under consideration
Business partners	2	
Events	5	2
Communication/ rangers	34	2
Food & accommodation	8	6
Producers	4	1





CASE – National Park app



An aerial photograph of a coastal landscape. A river flows from the top right towards the bottom left, eventually emptying into a large body of dark blue water on the left side. The land is covered in dense green vegetation, with a network of smaller channels and tidal flats visible. The overall scene depicts a natural, undisturbed coastal environment.

The Trilateral Wadden Sea Cooperation
The Wadden Sea Forum



UNESCO World Heritage

- The Danish part of the Wadden Sea (is expected) to become part of the Wadden Sea World Heritage Site in June 2014



United Nations
Educational, Scientific and
Cultural Organization



The Wadden Sea
World Heritage Site
since 2009



CASE – Cross border cooperation

Photo Storys

The Halligs
Tallship Race

Editorial

Smuggling
Ships and sailors
Whaling
Walk on the bottom of the sea

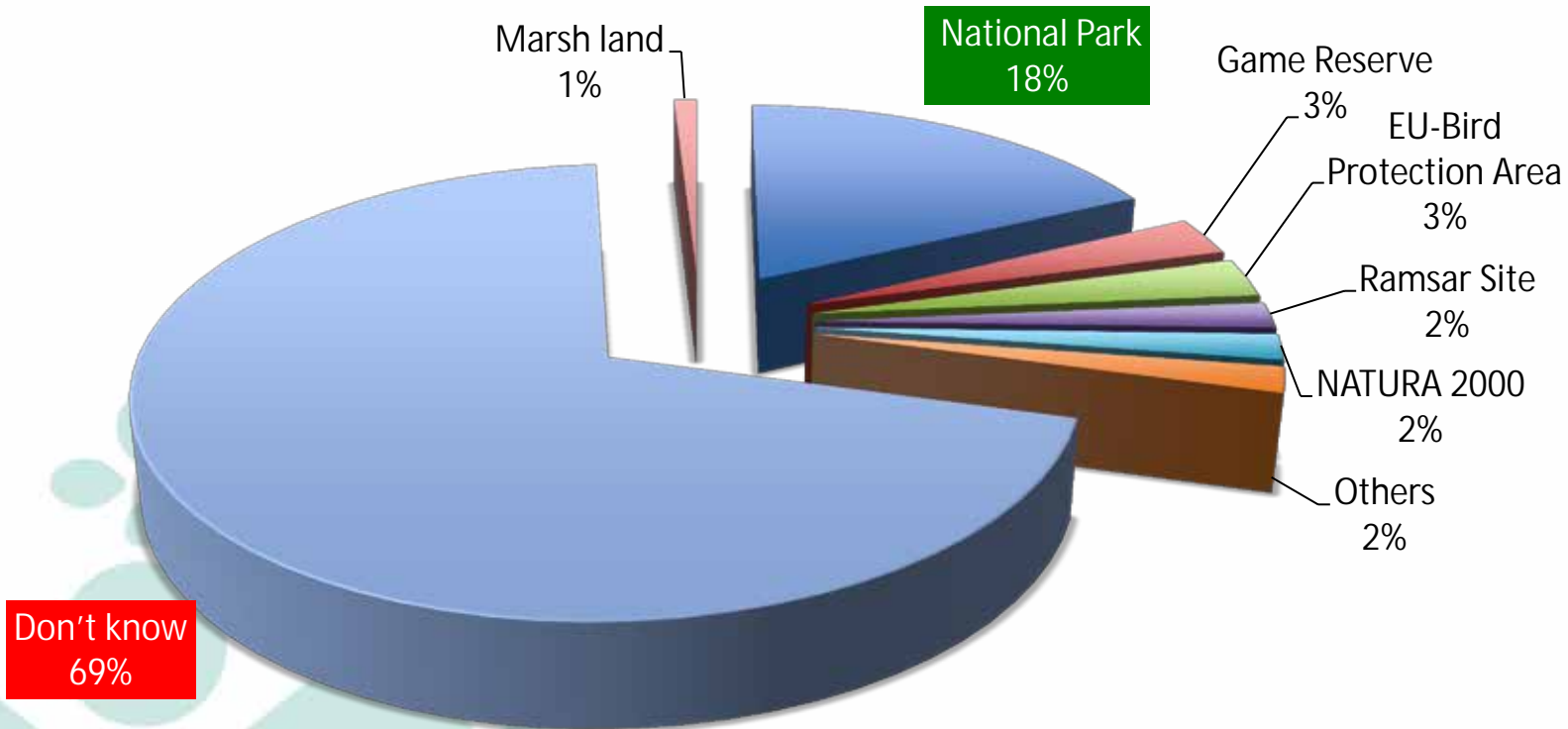
Guides

Kayak, surfing, fishing guides
POI guide
Responsible behavior
Events
Map





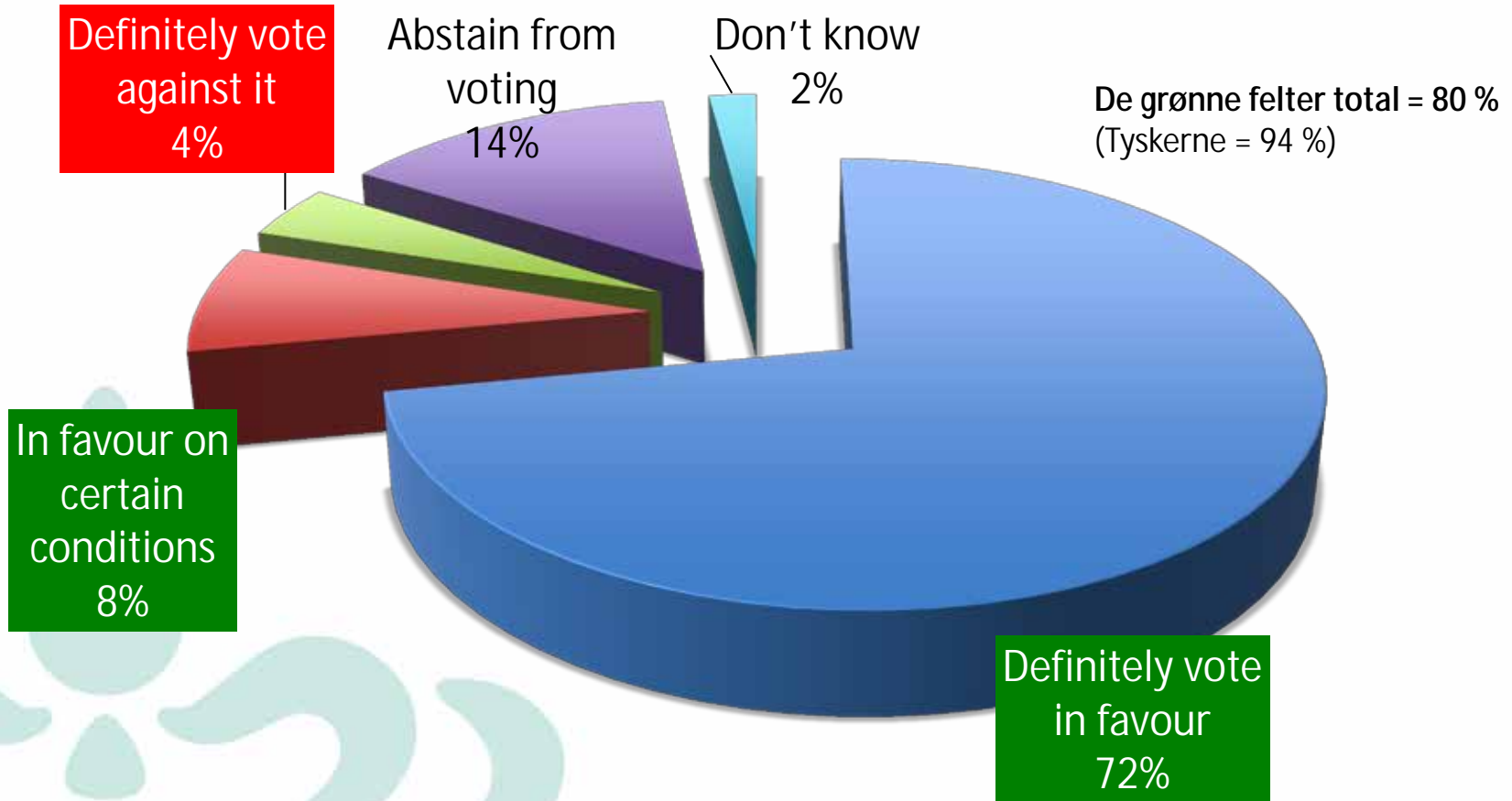
Case – Residents survey



The question: The Danish part of the Wadden Sea is covered by a number of designations – can you name one or two?



POINTE – People like the National Park



The Question: If there was to be an election on the continued existence of the National Park next Sunday – how would you vote!

Thank you!

