
UNESCO-Weltnaturerbe Wattenmeer - Besucherzentrum Cuxhaven

Nordheimstr. 200
27476 Cuxhaven

Tel: 04721 - 70070400
Fax:

wattbz@cuxhaven.de
[www.nationalparkhaus-wattenmeer.de/
cuxhaven](http://www.nationalparkhaus-wattenmeer.de/cuxhaven)

Information on accessibility was evaluated and verified on November 20, 2018 as part of the quality criteria / system "Tourism for all".

Images of the building/object



UNESCO-
Weltnaturerbe
Wattenmeer -
Besucherzentrum
Cuxhaven

©Joke Pouliart

Parking

Parking lot



Parkplatz

©Joke Pouliart

There is no parking lot available.

There is/are 2 parking space(s) for people with disabilities.

The parking space(s) for people with disabilities is/are not marked.

Parking space width: 350 cm

Parking space length: 500 cm

Distance from the parking space(s) for people with disabilities to the entrance area: 30 m

Public transportation

Train/Bus platform/Ship dock



Bussteig
Seehospital

©Joke Pouliart

Distance from the train/bus platform/ship pier to the entrance area for people with disabilities:
200 m

There is no written train/bus platform/ship pier information available.

Cash desk / Ticket counter

Counter/Cash Desk



Kasse, Rezeption
und Shop

©Joke Pouliart



Kasse, Rezeption
und Shop

©Joke Pouliart

The cash register display/price indication at the register is not easily recognizable (e.g. large and swiveling).

Showrooms

Showroom/Hall

Showroom/Hall



Ausstellungsraum
Erdgeschoss

©Joke Pouliart

Information is provided in writing. There is audible information.

Other technical possibilities of information: Audio-Guide

Showroom/Hall



Ausstellung 1.0G

©Joke Pouliart



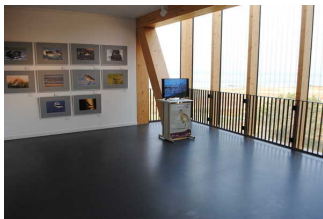
Ausstellung 1.0G

©Joke Pouliart

Information is provided in writing. There is audible information. Information is displayed photo realistically.

Other technical possibilities of information: Audio-Guide

Showroom/Hall



Exhibition 2.Floor Spezial Exhibition

©Joke Pouliart

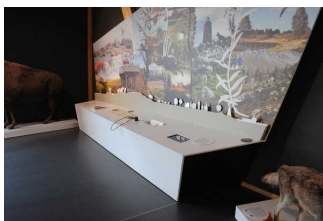


Exhibition 2.Floor Bibliothek

©Joke Pouliart

Additional information only available in German: Sonderausstellung

Station/Object/Exhibit outdoors



Exponat Heide und Geestkliff im 1.0G

©Joke Pouliart

The exhibited objects are not well illuminated.

Information is provided in writing. There is audible information. Information is displayed photo realistically.

Technical Aids: Audio Guide

Elevator/lift



Aufzug

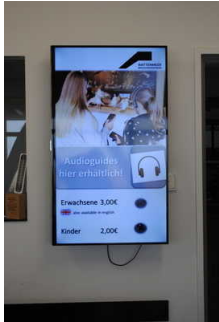
©Joke Pouliart

An outgoing emergency call in the elevator is confirmed audibly, e.g. by an intercom system.

Additional information only available in German: Ansage der Etagen ab Saison 2019

Aids

Alarm/Aids



Alarm/Hilfsmittel - Erstgespräch

©Joke Pouliart

There is no alarm.

There is no clearly visible alarm.

Elevator/lift: Aufzug Erdgeschoss bis 2.OG

An outgoing emergency call in the elevator is confirmed audibly, e.g. by an intercom system.

There is no audio induction loop at the counter/reception desk.

There is no induction loop system in other (conference) rooms.

Reading aids (reading glasses, magnifying glasses, etc.),

Audio-Guide is available. QR code is available.

Guided tour

Guided tours

No pre-registration for the guided tour is necessary.

Aids offered: Audio-Guide für Kinder,
Erwachsene deutsch und englisch