
UNESCO-Weltnaturerbe Wattenmeer - Besucherzentrum Cuxhaven

Nordheimstr. 200
27476 Cuxhaven

Tel: 04721 - 70070400
Fax:

wattbz@cuxhaven.de
[www.nationalparkhaus-wattenmeer.de/
cuxhaven](http://www.nationalparkhaus-wattenmeer.de/cuxhaven)

Information on accessibility was evaluated and verified on November 20, 2018 as part of the quality criteria / system "Tourism for all".

Images of the building/object



UNESCO-
Weltnaturerbe
Wattenmeer -
Besucherzentrum
Cuxhaven

©Joke Pouliart

Parking

Parking lot



Parkplatz

©Joke Pouliart

There is no parking lot available.

There is/are 2 parking space(s) for people with disabilities.

The parking space(s) for people with disabilities is/are not marked.

Parking space width: 350 cm

Parking space length: 500 cm

The surface quality of the car park is not vibration free and is easy to walk and drive on (e.g. asphalt, narrow-jointed slabs, etc.).

Distance from the parking space(s) for people with disabilities to the entrance area: 30 m

External path



Weg vom Parkplatz
für Menschen mit
Behinderung zum
Eingang

©Joke Pouliart

Width of the path: 150 cm

Length of the path: 30 m

Due to its surface characteristics, the path is not vibration-free and easy to walk on (e.g. asphalt, narrow-jointed slabs, etc.).

Maximum longitudinal gradient of the path: 1 %

Maximum longitudinal gradient over a distance of 5 m.

There is no seating available.

Public transportation

Train/Bus platform/Ship dock



Bussteig
Seehospital

©Joke Pouliart

Distance from the train/bus platform/ship pier to the entrance area for people with disabilities:
200 m

Width of the manoeuvring space along the train/bus platform/ship pier: 200 cm

There are no seating areas available.

External path



Weg vom Bussteig
zum Eingang

©Joke Pouliart

Width of the path: 250 cm

Length of the path: 200 m

Due to its surface characteristics, the path is not vibration-free and easy to walk on (e.g. asphalt, narrow-jointed slabs, etc.).

Maximum longitudinal gradient of the path: 0 %

Maximum longitudinal gradient over a distance of 0 m.

There is no seating available.

Entrance

Entrance area



Eingangsbereich

©Joke Pouliart

Clear width of the passageway: 158 cm

Type of door: double leaf

The door is opened without using any force (lever handle, light barrier sensor, motion detector, etc.).

The WIDTH of the smaller manoeuvring area in front of / behind the door: 225 cm

The DEPTH of the smaller manoeuvring area in front of / behind the door: 350 cm

The threshold height: 0 cm

Threshold/step/stairs



Treppe auf dem Weg vom Parkplatz und ÖPNV zum Eingang

©Joke Pouliart

Existing thresholds/steps: 9

The height of the thresholds/steps: 15 cm

The staircase has a handrail on one side.

Ramp



Rampe auf dem Weg vom Parkplatz und ÖPNV zum Eingang

©Joke Pouliart

Maximum longitudinal gradient of the ramp: 2 %

Minimum width of the ramp: 120 cm

Length of the longest ramp section: 35 m

The ramp has a handrail on one side.

The handrails are not horizontally extended at the beginning and at the end.

The WIDTH of the manoeuvring space in front of the ramp: 200 cm

The DEPTH of the manoeuvring space in front of the ramp: 180 cm

The WIDTH of the manoeuvring space at the end of the ramp: 248 cm

The DEPTH of the manoeuvring space at the end of the ramp: 500 cm

Cash desk / Ticket counter

Counter/Cash Desk



Kasse, Rezeption und Shop

©Joke Pouliart



Kasse, Rezeption und Shop

©Joke Pouliart

The WIDTH of the manoeuvring space in front of the counter: 400 cm

The DEPTH of the manoeuvring space in front of the counter: 280 cm

The counter / cash desk is at its highest point 114 cm high.

The counter / cash desk is at its lowest point 73 cm high.

There is no other, equivalent communication possibility while in a sitting position.

Showrooms

Showroom/Hall

Showroom/Hall



Ausstellungsraum Erdgeschoss

©Joke Pouliart

The width of the narrowest passageway in the room: 109 cm

Information is provided in writing. There is audible information.

Other technical possibilities of information: Audio-Guide

Showroom/Hall



Ausstellung 1.OG

©Joke Pouliart



Ausstellung 1.OG

©Joke Pouliart

Clear width of the passageway: 100 cm

Type of door: single leaf

The WIDTH of the smaller manoeuvring area in front of / behind the door: 179 cm

The DEPTH of the smaller manoeuvring area in front of / behind the door: 299 cm

The threshold height: 0 cm

Additional information only available in German: Feuer und Rauchschutztür steht dauerhaft offen

Clear width of the passageway: 100 cm

Type of door: single leaf

The WIDTH of the smaller manoeuvring area in front of / behind the door: 179 cm

The DEPTH of the smaller manoeuvring area in front of / behind the door: 299 cm

The threshold height: 0 cm

Additional information only available in German: Feuer und Rauchschutztür steht dauerhaft offen

The width of the narrowest passageway in the room: 122 cm

Information is provided in writing. There is audible information. Information is displayed photo realistically.

Other technical possibilities of information: Audio-Guide

Showroom/Hall



Exhibition 2.Floor Spezial Exhibition

©Joke Pouliart



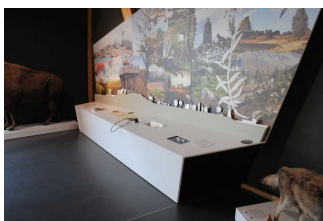
Exhibition 2.Floor Bibliothek

©Joke Pouliart

The width of the narrowest passageway in the room: 119 cm

Additional information only available in German: Sonderausstellung

Station/Object/Exhibit outdoors



Exponat Heide und Geestkliff im 1.OG

©Joke Pouliart

The WIDTH of the manoeuvring space in front of the station/object/exhibit: 400 cm

The DEPTH of the manoeuvring space in front of the station/object/exhibit: 250 cm

The station/object/exhibit is not predominately visible, perceptible or recognisable when seated.

The information cannot be read while seated.

Technical Aids: Audio Guide

Threshold/step/stairs



Treppenhaus von Erdgeschoss bis 2.OG

©Joke Pouliart

Existing thresholds/steps: 50

The height of the thresholds/steps: 18,5 cm

The staircase has handrails on both sides.

Elevator/lift



Aufzug

©Joke Pouliart

The WIDTH of the manoeuvring space in front of the elevator when entering: 415 cm

The DEPTH of the manoeuvring space in front of the elevator when entering: 151 cm

Clear passage width of the elevator door: 91 cm

The WIDTH of the cabin inside: 110 cm

The DEPTH of the cabin inside: 138 cm

The WIDTH of the manoeuvring space in front of the elevator when exiting: 500 cm

The DEPTH of the manoeuvring space in front of the elevator when exiting: 220 cm

There is no horizontal control panel.

Additional information only available in German: Ansage der Etagen ab Saison 2019

Corridor/way/aisle inside



Weg in der
Ausstellung /
Rundgang,
verbindender Weg
zwischen den
Ausstellungsräumen,
WC, Shop

©Joke Pouliart



Weg in der
Ausstellung /
Rundgang,
verbindender Weg
zwischen den
Ausstellungsräumen,
WC, Shop

©Joke Pouliart

Length of the corridor/way/aisle: 100 m

Minimum width of the corridor/way/aisle: 143 cm

Existing passageways are at least 88 cm wide.

Shop

Room



Shophereich im
Foyer

©Joke Pouliart

The WIDTH of the room: 9,5 m

The DEPTH of the room: 7 m

The width of the narrowest passageway in the room: 101 cm

There is no seating available.

Public toilet

Public toilet



Öffentliches WC

©Joke Pouliart

Clear width of the passageway: 105 cm

Type of door: single leaf

The door is opened requiring the users own effort. The door is opened by a service technician.

The WIDTH of the smaller manoeuvring area in front of / behind the door: 127 cm

The DEPTH of the smaller manoeuvring area in front of / behind the door: 415 cm

The threshold height: 0 cm

The toilet door can be opened without a key.

There is a uni-sex toilet.

There is no toilet available for people with disabilities.

The depth of the toilet bowl: 71 cm

The WIDTH of the manoeuvring space left of the toilet: 90 cm

The DEPTH of the manoeuvring space left of the toilet: 71 cm

The WIDTH of the manoeuvring space right of the toilet: 92 cm

The DEPTH of the manoeuvring space right of the toilet: 71 cm

The WIDTH of the manoeuvring space in front of the toilet: 204 cm

The DEPTH of the manoeuvring space in front of the toilet: 150 cm

The height of the toilet seat: 51 cm

There is no grab rail on the left side of the toilet.

There is no grab rail on the right side of the toilet.

The WIDTH of the manoeuvring space in front of the sink: 204 cm

The DEPTH of the manoeuvring space in front of the sink: 150 cm

Corridor/way/aisle inside



floor between
Rezeption zur Toilet

©Joke Pouliart

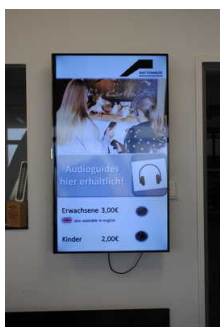
Length of the corridor/way/aisle: 15 m

Minimum width of the corridor/way/aisle: 150 cm

Existing passageways are at least 88 cm wide.

Aids

Alarm/Aids



Alarm/Hilfsmittel -
Erstgespräch

©Joke Pouliart

Elevator/lift: Aufzug Erdgeschoss bis 2.OG

An outgoing emergency call in the elevator is confirmed audibly, e.g. by an intercom system.

Reading aids (reading glasses, magnifying glasses, etc.),

Guided tour

Guided tours

No pre-registration for the guided tour is necessary.